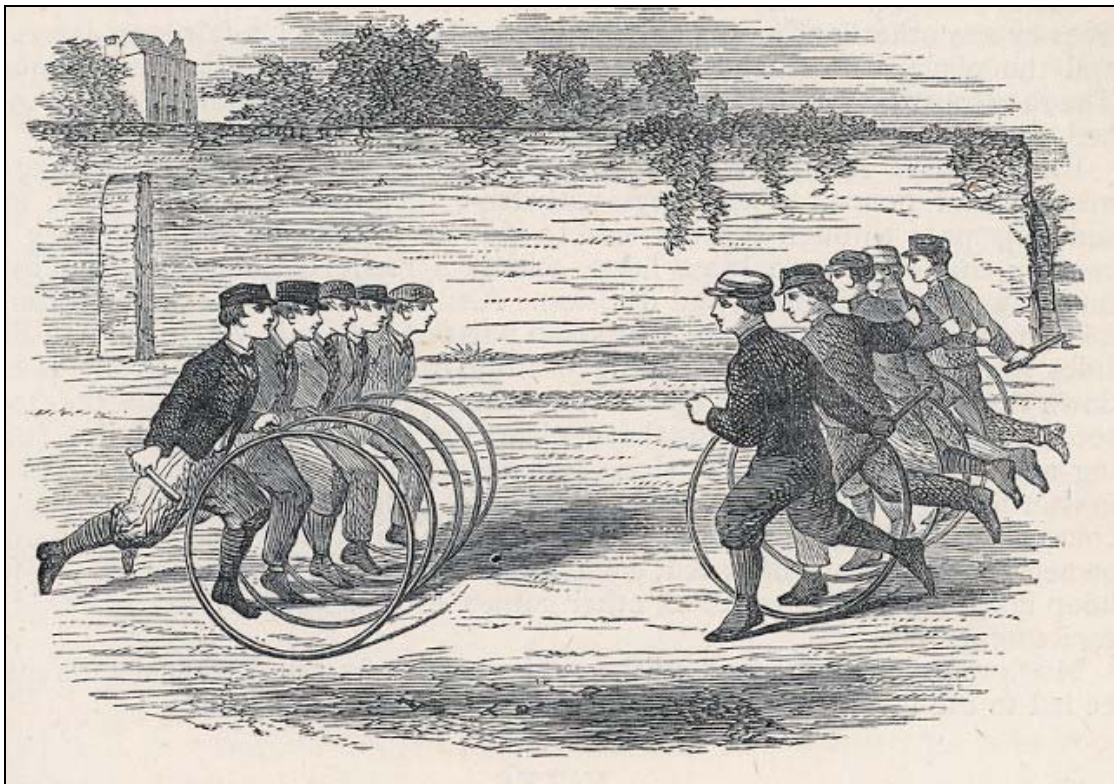


Summer Time Travelers

A Guide for Group Leaders



Westfield Heritage Village

This guide provides an overview of the “Summer Time Traveller” program as well as information that you will need to make the most of your visit to Westfield.

Program Overview

We are delighted that you and your group will be joining us for our Summer Time Travelers program. Westfield is a special place where children and adults have the opportunity to learn about the past in an immersive, multi-sensory environment that makes history come alive. We strive to provide enjoyable, and informative educational opportunities that allow participants to learn about our past through active, hands-on experiences.

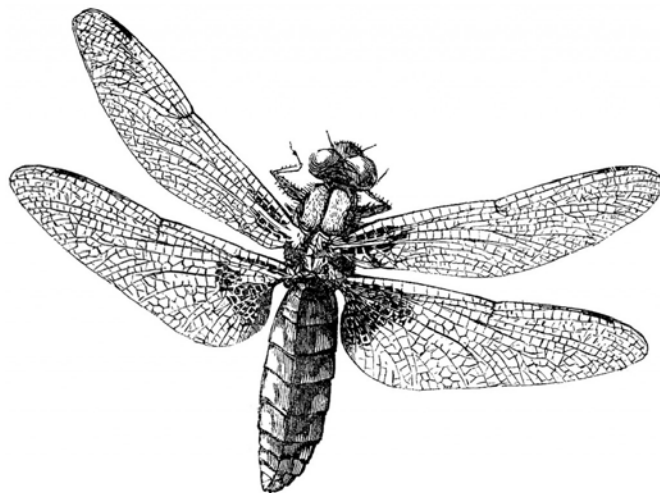
Westfield's summer program is designed to be a balance of education and entertainment. We are committing to offering a unique, engaging environment where participants can explore, imagine and discover, and have fun in the process.

Program Objectives

This program is designed to help participants imagine what life might have been like in Southern Ontario in the nineteenth century. Utilizing our beautiful rural location, rare collection of period buildings and rich artifact collection, our knowledgeable and welcoming costumed interpreters will take the groups back in time.

The primary objectives of this program are to...

- illustrate aspects of the daily life of families living on farms and in small communities in 19th century Canada
- encourage participants to consider how co-operative work benefits a community
- explore the connections between human activity and natural environments
- consider the social, cultural and technological circumstances that impacted individuals and families in earlier times
- have fun!



Making the Most of Your Visit

Confirmation Form

Please check your confirmation form carefully and notify us as soon as possible if the information is incorrect, or if you need to make any changes. Westfield has a three week cancellation policy.

Payment

We will send an invoice following your visit. If you prefer to pay on the day of your visit, please make cheque payable to "**Hamilton Conservation Authority.**"

Arrival Time

Program times are 10:00 - 11:30 and 12:30 – 2:00. Please plan to arrive by 9:45 a.m. for a morning or all day program and by 12:15 pm. for an afternoon program. This will ensure your program will begin on time. When your group arrives you will be greeted by a costumed interpreter and given further directions.

Late Arrivals

Any groups arriving after the program start time of 10:00 am or 12:30 pm will result in parts of the program being shortened or omitted. We will not be able to extend program times.

Lunches

Program participants are encouraged to bring nut free, litter-less lunches and refillable drink bottles. Please note that Westfield cannot guarantee that our facilities are nut-free.

Lunch Space - The Ironwood Hall

The Ironwood Hall is available as a lunch room at a cost of \$37.29, but needs to be booked in advance. Lunches will be stored here but please note that there is no refrigeration or microwaves available for school use. This area is not locked, so please do not leave valuable items. Washrooms are located in this building and you will also find a pay telephone and water fountain at the side entrance.

Outside Picnic Area – Groups are welcome to use our picnic area free of charge and the space does not need to be booked in advance. The picnic area is uncovered. You will have access to washrooms, a pay telephone and water fountain.

Storing Belongings

In cases where groups have not booked the Ironwood Hall but wish to have lunch in the picnic area, you will be asked to leave your lunches outside of the Hall while in program. Please note that there is some shade in this area however no refrigeration. Please encourage program participants to pack an icepack and/or use thermo lunch bags.

Dressing for the Weather

Students should dress appropriately for cool, hot or rainy weather. They will be spending the majority of the time outdoors and on gravel roads and in buildings that are heated by methods used during the 19th century. During cold weather boots, mitts, hats and heavy coats are strongly encouraged. In warmer weather sun hats, sunscreen, bug spray are all recommended.

Extreme Weather

All programs continue rain, snow, or shine. During weather extremes however a greater portion of our programs may be conducted indoors or adapted for the safety of participants and staff.

Movement Between Stations

To make the most of your program, please encourage your group to move as efficiently as possible from station to station. Your interpreters will direct you to each of your stations.

Supervision

You know your group best, so we will leave it to you to determine how many additional supervisors will be necessary. Please note, however, that due to the small sizes of many of our historic buildings, we recommend you not exceed a ratio of 1:5. You are responsible for supervising your group(s) at all times while on site.

Special Needs

Westfield is working to make the village fully accessible for all visitors, however all areas are not fully accessible at this time. Please let us know if anyone in your group requires special assistance or accommodation and we will do our best to provide the best experience possible.

Costumes

Students and teachers wishing to get into the spirit of the day are welcome to visit in historical costumes. Boys can wear dark dress pants, a white or plaid shirt, suspenders and vest. Girls can wear a dark dress or long dark skirt with cotton blouse and bib-style apron. All can wear straw hats, long black socks and dark leather shoes or boots. No jewelry or makeup should be worn.

Gift Shop

The Gift Shop is not normally open during school programming days however if requested in advance arrangements may be made.

Program Structure

Summer Time Traveler 1 - morning session – 10:00 am – 11:30 am (Arrival time 9:45 am)

Summer Time Traveler 2 – afternoon session – 12:30 pm - 2:00 pm (Arrival time 12:15 pm)

Upon arrival, you will be welcomed by a costumed interpreter, who will help organize the students into groups. Following a brief welcome and introduction, each group will be taken to the first of four stations by the interpreter. You will then be directed to each of the following stations.

Summer Time Traveler 1

A Trek to the Forest

Location: Forest Behind The Train Station

Walk in the footsteps of early settlers and discover the secrets of the forest, including how to identify plants, insects and trees. Participants will learn the ways in which early Canadians looked to the forest as a source of food, shelter, fuel, medicine, building material and recreation.

Schoolyard Fun

Location: Cathcart School Yard

What did Victorian children do at school when they weren't working at their desks? Spend some time in the school yard and try out some old-fashioned games and activities.

Farmyard Work and Play

Location: Lockhart Farm

Life on early Ontario farms involved a lot of work for all ages, but there was also time for fun. Participants will carry out a variety of farm chores and will celebrate the completion of their work with a barn dance.

Meeting at a Crossroads

Location: The D'Aubigny Inn

Inns served many functions in rural Ontario. These establishments were a welcome and necessary place of rest and nourishment during a long journey, a meeting place for community discussions and a centre for local news. In the rich, historic setting of the Inn, participants will learn about the conditions of early travel through a fun and active team activity.

Summer Time Traveler 2

I Spy Scavenger Hunt

Location: General Store, Gillen House, Drug Store

Participants will put their detective skills to the test when they choose a special object from the interpreter's sack and hunt for its mate while visiting several buildings in the village.

Puppet Show

Location: Gazebo

Puppet shows are a centuries-old tradition practiced throughout the world. Puppets are great story-tellers, and have been used to educate, entertain and inspire young and old for generations. Participants will learn how puppets were enjoyed in early Canada through this traditional, participatory puppet show activity.

All Aboard at the Train Station

Location; Train Station

The train has arrived and there is lot of work to do! Through an interactive visit to the Jerseyville Train Station, participants will learn about the wonder of steam technology and the various roles and functions of a busy railway station and its crew.

The Magic of Cinema

Location: Hardware Store/Theatre

Discover the fascinating history of how still photography led to the birth of silent pictures in the late 19th century. Participants will have the opportunity to try out early photographic equipment and take in a silent film.

